



JANUARY 2020 Newsletter



Telephone: 028 71 341419

info@chapelroadps.derry.ni.sch.uk

www.chapelroadps.co.uk

Principal: Mrs. Mary Bacheta

Dear families and friends

HAPPY NEW YEAR to everyone. We hope 2020 brings good health and happiness to us all. As always we have hit the ground running and the boys and girls are busy learning and enjoying being at our lovely school.

REMINDER-PRIMARY 1 & PLAYGROUP APPLICATIONS

If you have not yet applied for Primary 1 or are having any difficulty with the online application process, please do not hesitate to get in touch and we will try to help you. Also tell others about our fantastic school and playgroup if you have friends or family who are looking to apply.

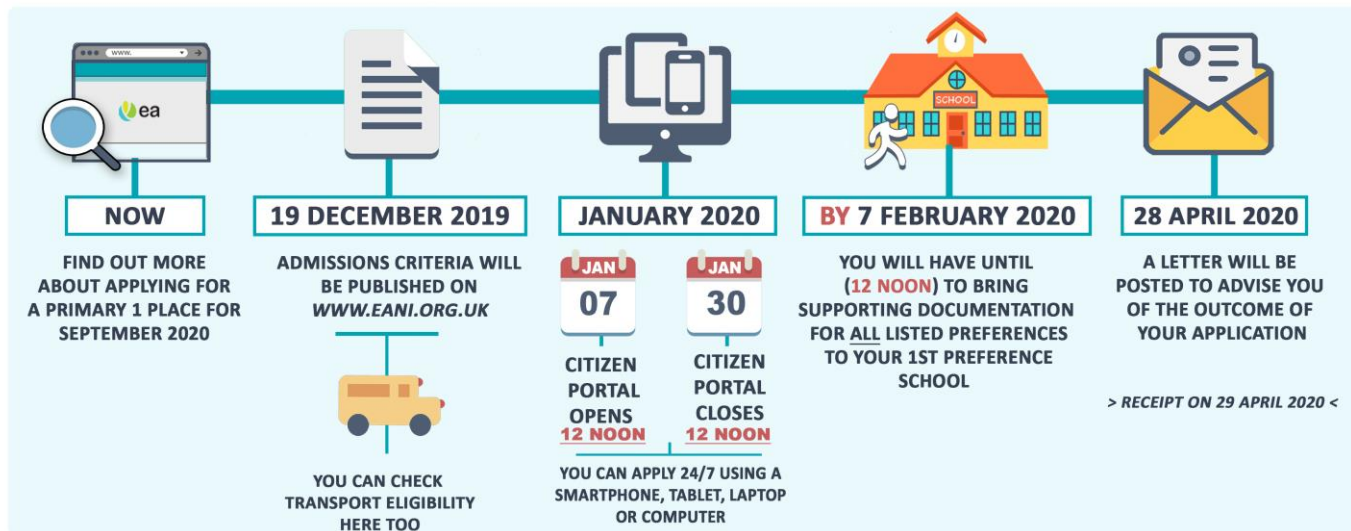
Please visit: <https://www.eani.org.uk/parents/admissions> for more information.



KEY DATES FOR PARENTS : Admissions Process for Primary One Places 2020

CHILDREN BORN ON OR BETWEEN **2 JULY 2015 AND 1 JULY 2016** WILL HAVE REACHED COMPULSORY SCHOOL AGE IN SEPTEMBER 2020

CHILDREN BORN ON OR BETWEEN **2 JULY 2016 AND 1 JULY 2017** CAN APPLY FOR A PLACE IN A RECEPTION CLASS.



Admissions Helpdesk Contact Details

Admissions Helpdesk can be contacted by phoning **028 9598 5595**

Lines are open Monday to Friday (9am - 5pm)

There is also information about applying for Pre-school. Please contact us if you need any assistance with your application.

GRANDPARENT'S MASS

As part of Catholic School's Week our annual Grandparent's mass will take place on **Monday 27th January 2020** at 1.30pm. Please come along and join us.

REMINDER SCHOOL CLOSURES

School will close for HALF TERM **Monday 17th February 2020 to Friday 21st February 2020**. Children return to school on Monday 24th February 2020.

SHARED EDUCATION PROGRAMME

Our Shared Education partnership will provide a number of learning opportunities for both staff and pupils over the next two terms. The trips out and engagement opportunities are listed on the school calendar which can be found on the website. Our main focus is Health and Well-being including Physical Activity. Staff will also attend training opportunities to ensure the highest outcomes for all stakeholders.

PARENT-TEACHER MEETINGS

An opportunity for you to come along and talk with your child's class teacher has been planned for **Friday 14th February 2020 between 1.00pm and 3.00pm**. The children will remain in school under the supervision of the teaching assistants.

The class teachers will be available in the assembly hall to meet with parents to discuss progress and development. It is our practice to arrange meetings with parents as and when the need arises so these meetings are expected to be brief. If for any reason you need more time to discuss any issues at length, please make an appointment to meet the teacher at another time.

Also if this time is not suitable please contact the office or speak to the class teacher. It is important to have a meeting with the teacher to find out how your child is doing.

P3-P7 FRUIT/HEALTHY BREAK

If your child would like to have fruit in school, please remember to send in £1 weekly.

ASSEMBLIES-SAVE THE DATE!

Please come along to our class assemblies in the assembly hall. See dates below for your child's class.

P6 assembly-24th January 1.30pm

P2 assembly- 7th February 1.30pm

P5 assembly-6th March 1.30pm

P3 assembly-3rd April 1.30pm

P4 and P7 assembly-11th May 10.00am

P1 assembly-5th June 1.30pm

P7 Leaver's Assembly-26th June 1.30pm



FIRST CONFESSION-PRIMARY 4

Friday 12th March 2020 at 1.15pm in the assembly hall.

Please note change of time.



CONFIRMATION-PRIMARY 7

Saturday 28th March 2020 at 11.00am in St. Columb's Church, Chapel Road followed by refreshments in the parish hall.

FIRST COMMUNION-PRIMARY 4

Saturday 9th May 2020 at 11.30am in St. Columb's Church, Chapel Road followed by refreshments in the school assembly hall.

REMINDER-ADVERSE WEATHER/SNOW ARRANGEMENTS

Luckily, we do not experience too many days where we feel that we may not be able to open the school or that weather conditions may hinder attendance at school. To put it into context, children are expected to attend 185 school days so we are only talking about a very small number of adverse weather days when conditions may cause us an issue. We try not to dwell on these days but focus on all the other happy days we come to school.

In the event of adverse weather conditions, the most important factor is the Health & Safety of every member of our school community.

To ensure you do not feel under pressure or put anyone in a situation where children or adults are at risk we would encourage you to carefully assess the weather conditions before making the journey to school. We understand that a large number of families including staff live in areas where there are steep hills and untreated roads.

We do not want anyone to worry about the journey to school. We also understand that parents and guardians have the added pressure of needing to get to work on time. Unfortunately, we

cannot predict or change bad weather but we can offer solutions to help us have a more pleasant experience.

Please note the following:

As far as is possible we will always try to open the school, however, on the rare occasion where it is deemed too dangerous, a message will be sent through the website and on Facebook at the earliest opportunity.

In the event of adverse weather, there is no immediate rush required to get to school. Children will be marked in for the morning session if they arrive in before 10.30am. Just contact the office to let us know.

If you can avoid driving up the hill to the school, please do so as it can be very slippery, especially around school time when traffic is going in both directions. A later arrival will also mean you will miss some of the congestion. A number of parents used the entrance down at Shepherd's Glen last year and they found this an easier route.

Just an additional note on the above: I have tried for the last 3 years to get the 'gritter' to come up and salt the hill and have been told that we need to have a larger number of road users to justify this. If you have time, I would encourage you to continue to put pressure on the local MLAs and council to afford us this much needed service.

Mrs. Bacheta and staff